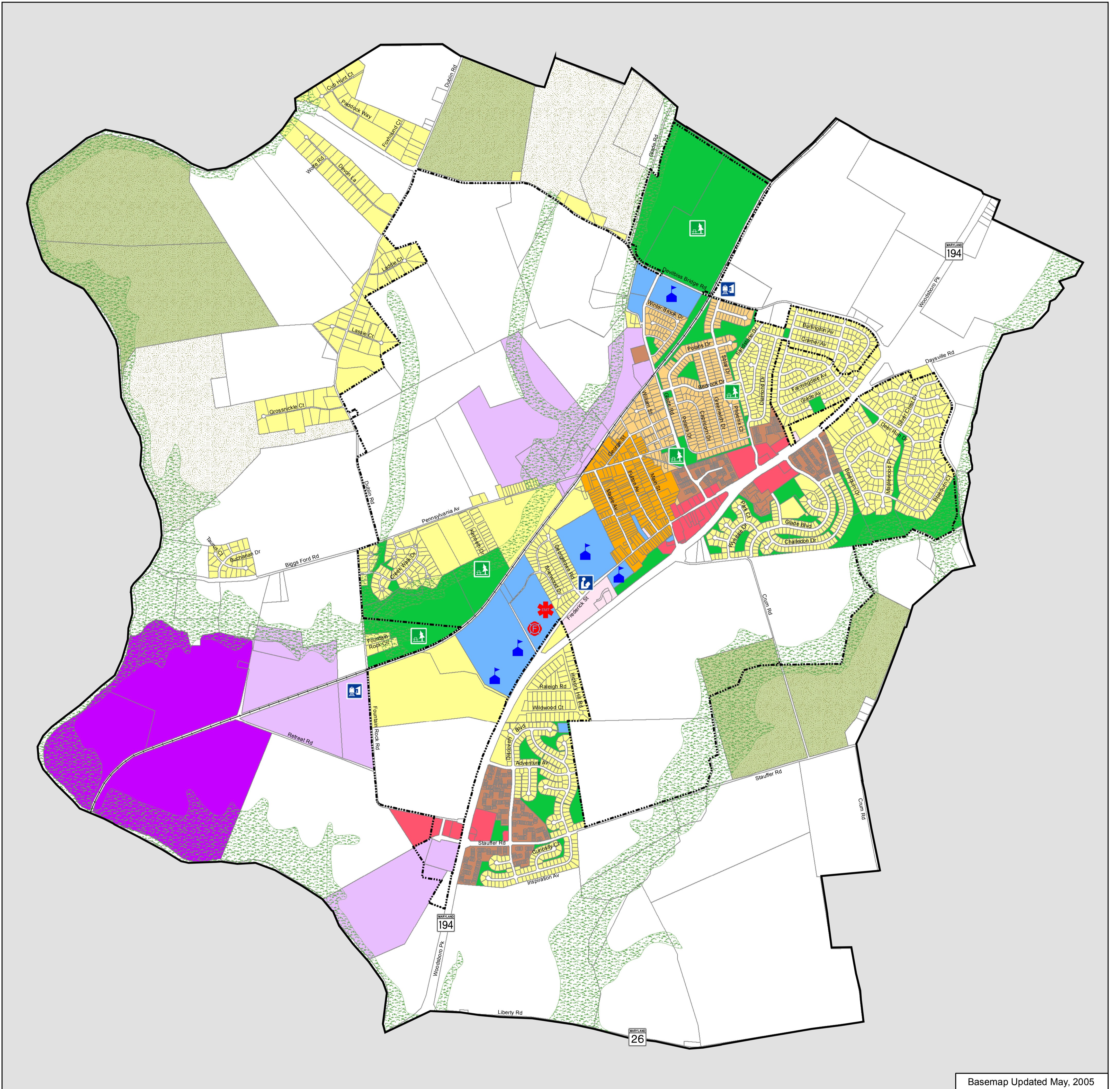
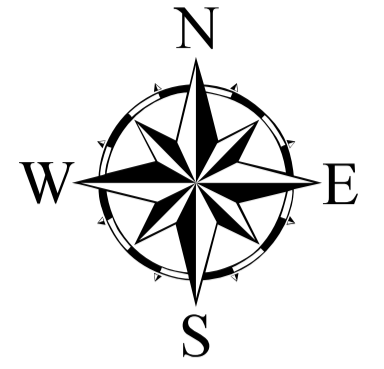




# TOWN OF WALKERSVILLE

## 2003 Comprehensive Plan



Basemap Updated May, 2005

### Community Facilities

- Proposed Transit Station
- Fire Station
- Library
- Park
- School
- Rescue Station

### Land Use Designations

- Agricultural / Rural
- Agricultural Preservation District
- Agricultural Preservation Easement
- Institutional
- Parks and Open Space
- Low Density Residential
- Medium Density Residential
- High Density Residential
- Old Town
- General Commercial
- Office / Commercial
- Limited Industrial
- General Industrial
- 100 Year Floodplain
- Town Boundary
- Growth Area Boundary -- Annexation Limits

Comprehensive Plan was adopted on the 9th day of July, 2003 by the Burgess and Commissioners of Walkersville, Maryland

